

**SPECIFICATIONS**

<b>PROGRAMMABLE MULTI MEDIA CONTROLLER</b>	2 x configurable com ports provide control of Projector/Plasma/ AV Switcher via RS-232 commands
<b>CONFIGURING COM PORT</b>	1 x configuring com port provides programming of controller and acts as a slave when configured with another Master controller or PC AP control
<b>IR LEARNING</b>	1 x programmable IR control (IRMCs) enables customized IR control of projector when RS-232 control is not available
<b>PROGRAMMABLE BUTTONS</b>	A total of 11 programmable buttons that can be configured with RS-232 and/or IR control plus digital Volume control for Volume Up, Down and Mute control
<b>CUSTOMIZED BUTTON LABEL / TEXT</b>	Input selection/control buttons can be customized with clearly labeled text/icon with cool backlit for visibility control even in total darkness
<b>LCD DISPLAY</b>	Clear indication of status and function of the controller through a small LCD panel
<b>CLOCK</b>	Built-in Clock function
<b>AUTO SHUT-DOWN TIMER</b>	A programmable timer that allows automatic shut down of the system i.e. projector to preserve energy and prolong the projector lamp life
<b>MACRO CONTROL</b>	Allows customized macro control, which makes control easier for end users with just one touch of a button
<b>VOLUME CONTROL</b>	Allows control of volume of media switcher and/or projector
<b>PANEL LOCK</b>	Programmable "panel lock" functions that tie in with "Auto Shut down timer" that prevent any mis-use of the panel after normal class timing and "reset" based on pre-programmed time

*\* Specifications are subject to changes without notice.*

# Multi Media Controller



Model: AVS-1200/V2

## PRODUCT DESCRIPTION

The **ABtUS AVS-1200C/V2** is a high performance Multi Media Controller designed for any small Multi Media Class Room or boardroom application.

With its simple integration and user friendly functions (easy to use) ABtUS AVS-1200C/V2 can be easily integrated and acts as an extended central media control unit. ABtUS offers a universal projector controller that controls a projector's power on/off, input switching, and volume control via RS-232 and/or IR. The ABtUS AVS-1200C/V2 can also be configured as a motorized screen or room lightings control. It can also be easily mounted no matter where it is: In a lectern, desktop, wall, or even a rack.

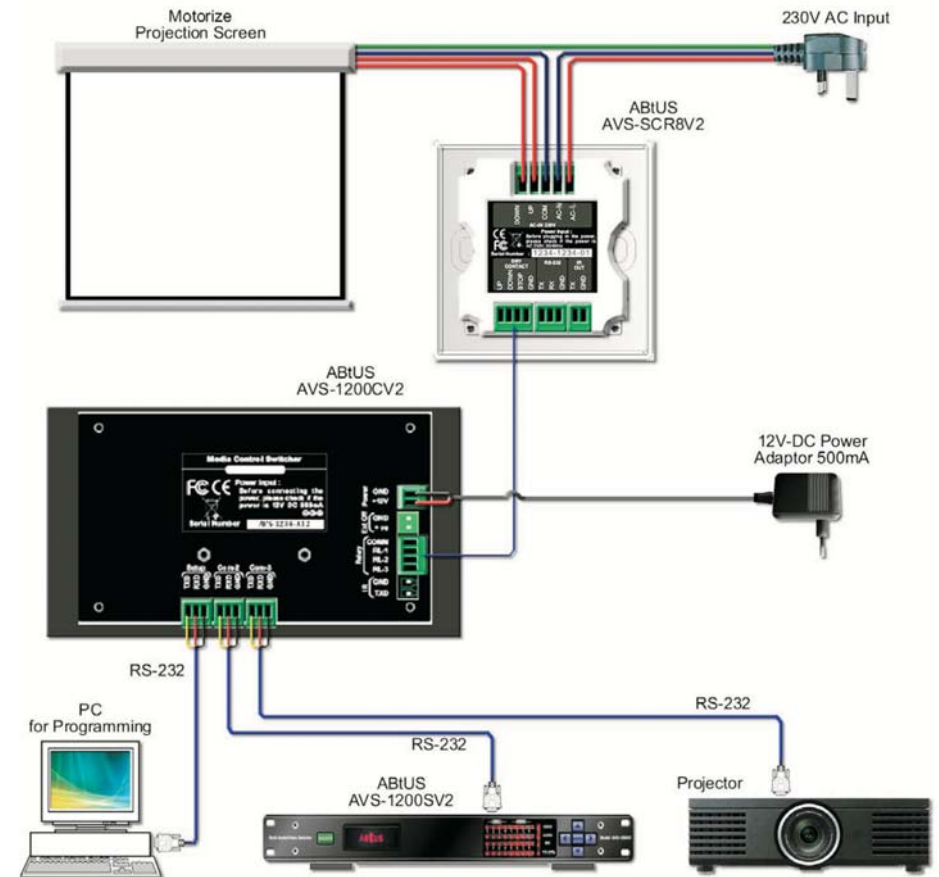
With ABtUS AVS-1200C/V2 controller, no user training is required. Presenters would be able to walk in into any of these multi media classrooms or boardroom and easily operate the media system regardless of the type or brand of projector being used. Standardization also makes setup and maintenance easier to integrate and support.

## PANEL OVERVIEW



## SYSTEM DIAGRAM

Detail connection and configuration of the AV projection system with AVS-1200CV2 and AVS-1200SV2

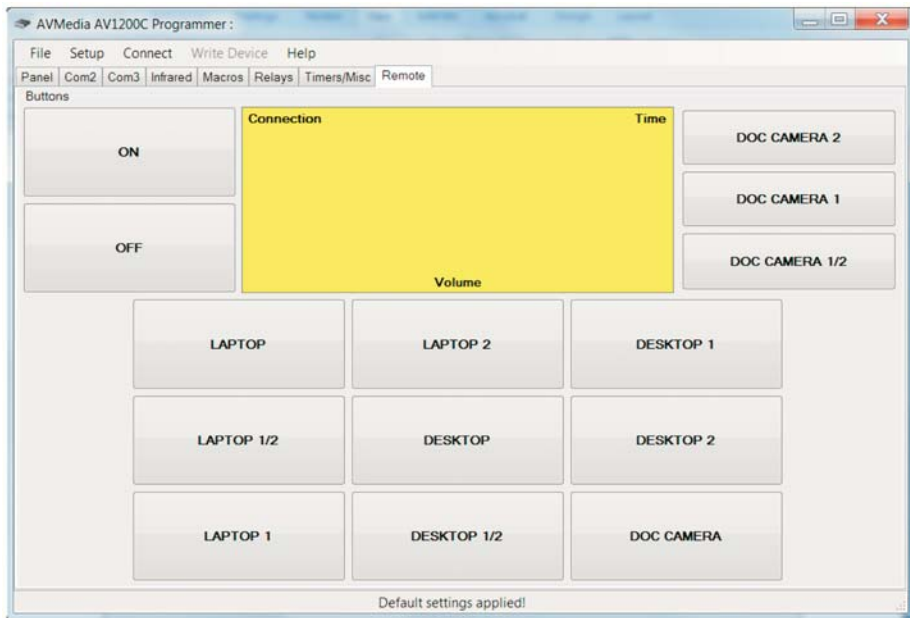


\* Specifications are subject to changes without notification

## AV1200C Program Editor

### REMOTE CONTROL MODE

Allows ABtUS Media Controller AVS-1200CV2 to be control through this software

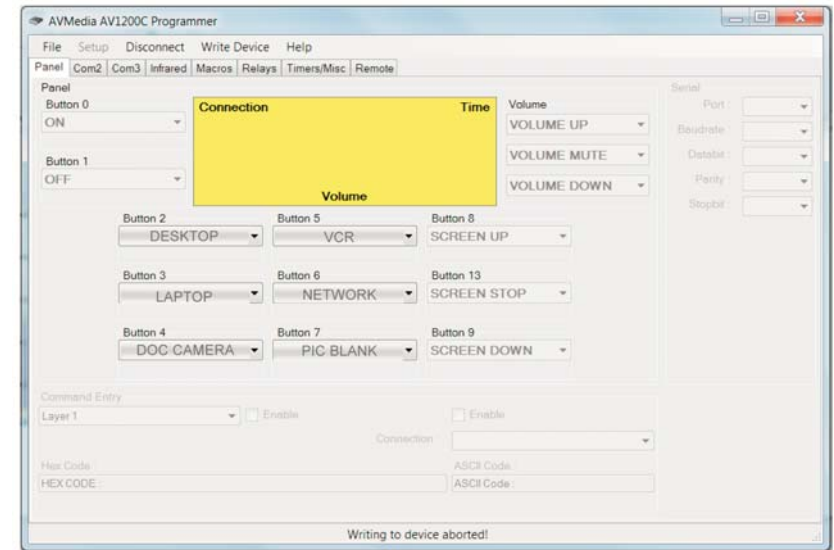


### PROGRAMMING MODE

#### “Panel Tab”

This allows programmer to assign the button function name as according to the physical Control panel.

Note only button 2 to 7 are allows for assignment as the rest fixed with default function. Buttons “Function Name” can be assign from its individual standard drop list. Once done the rest of the “Tab” will follows this configuration accordingly



### PHYSICAL CONTROLLER BUTTONS LAYOUT

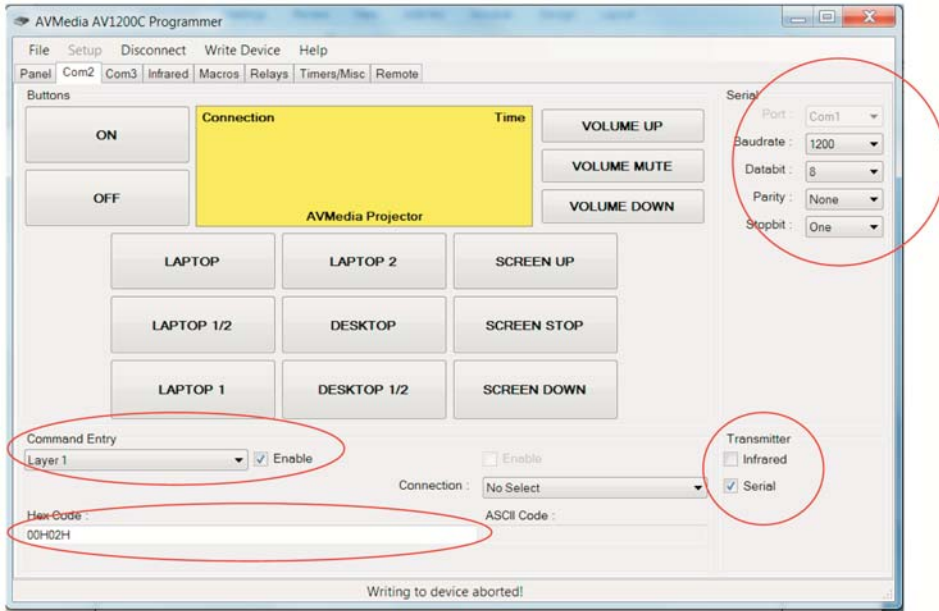


## PROGRAMMING MODE

### 1. "Programming" Mode:

#### 1.1 "Com2" Tab (Control of Projector)

This allows user to configure the communication port 2 accordingly with respect to their buttons communication protocol (command code of the projector) as well as the it's parameter setting.



#### "Serial"

This allow configuration of Com2 communication parameter i.e. Baud rate, Data Bit, Parity Bit and Stop bit of the controlled Projector.

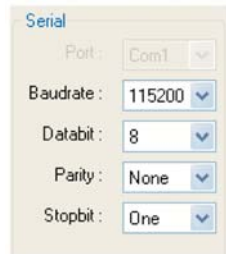
Setting can be easily done with its individual drop list.

Bard Rate: 1200 to 115200

Data Bit: 7 or 8

Parity Bit: None or Odd or Even

Stop Bit: one



## PROGRAMMING MODE

#### "Layer"

When "enable" this allow second layout command to be configure accordingly



#### "Hex Code"

Command code entry for the relative button, only Hex Code is allows



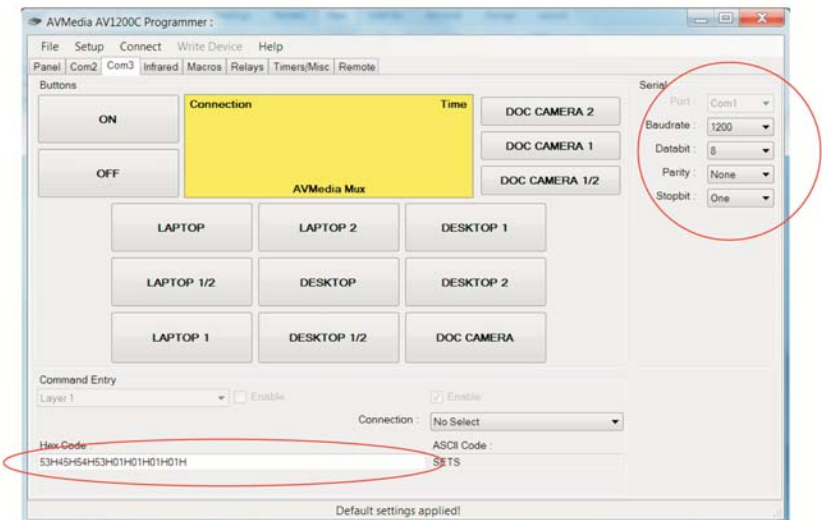
#### "Transmitter"

Com 2 allows IR or Serial to be transmitted in the case if either one of the two is not available at the Projector controlled. "Check" on the respective box accordingly



#### 1.2 "Com3 Tab" (Control of ABTUS AV Switcher AVS-1200SV2 or any RS-232 controlled AV switcher)

This allows user to configure the communication port 2 accordingly with respect to their buttons communication protocol (command code of the projector) as well as the it's parameter setting.



## PROGRAMMING MODE

### “Serial”

This allow configuration of Com3 communication parameter i.e. Baud rate, Data Bit, Parity Bit and Stop bit of the controlled AV Switcher.

Default Parameter for AVS-1200SV2 is as followed:

Baud Rate: 9600

Data Bit: 8

Parity Bit: None

Stop Bit: One

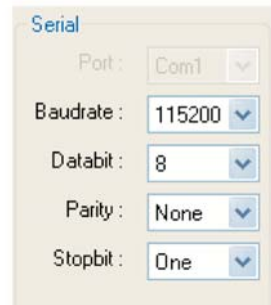
Setting can be easily done with its individual drop list.

Bard Rate: 1200 to 115200

Data Bit: 7 or 8

Parity Bit: None or Odd or Even

Stop Bit: one



### “Layer”

Notice that the “Layer” function is mask off, which means that “Com Port 3” can only, allows single layer command to be configured.



### “Hex Code”

Command code entry for the relative button, only Hex Code is allows



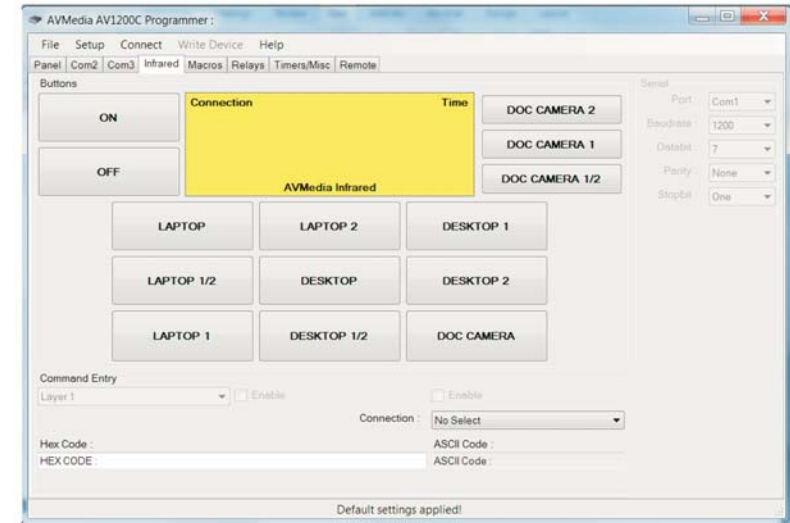
### “Transmitter”

Note that Com 3 ONLY allows Serial RS-232 transmission, No IR is allows in this case.

## PROGRAMMING MODE

### 1.3 “Infrared Tab”

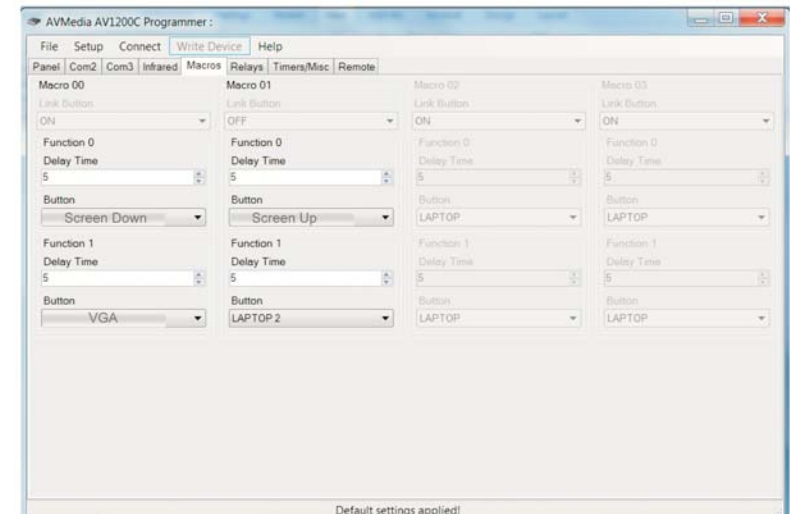
This allows user to configure/Learn the IR command code of the Controlled projector in the case where RS-232 is not available.



### 1.4 “Macros Tab”

“Macros” allows any buttons/function to be link to either Power ON or Power Off button after specific delay time from 5 to 10 sec.

Example: After “Power ON” set projection screen “Down” with delay of 5 sec and set projector default input select to VGA with another 5 sec of delay.

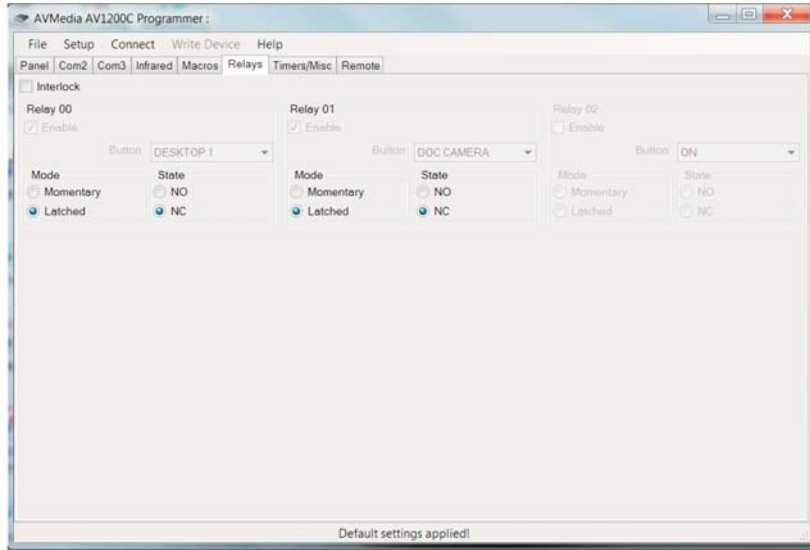




## PROGRAMMING MODE

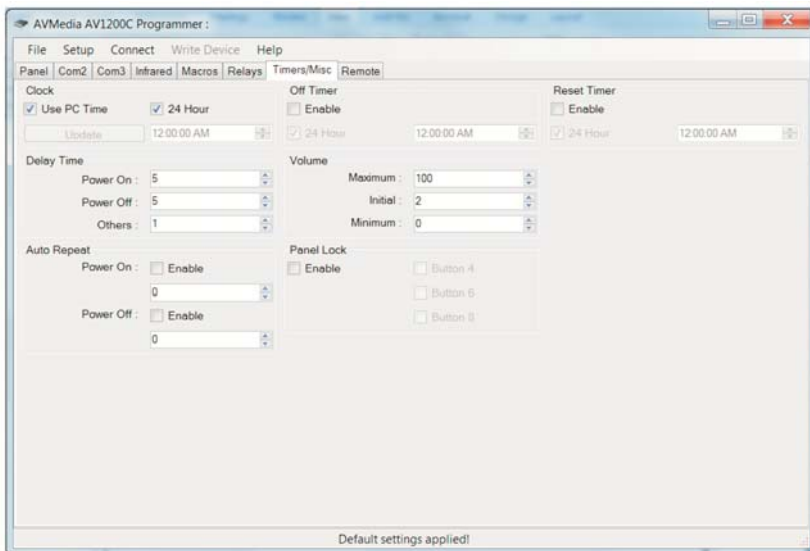
### 1.5 “Relays Tab”

This allows configuration of “Relays” digital I/O for controlling of [projection screen in conjunction with ABtUS screen controller AVS-SSR8V2.



### 1.6 “Timers/Misc”

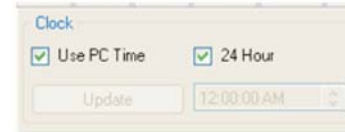
This allows system time to be set manually or base on programming PC time in 12 or 24 hour format as well as “Auto Timer Off” with “Panel Lock” and “Reset” after time out.



## PROGRAMMING MODE

### “Clock setting”

Check on “Use PC Time” to set time in 12 or 24 hour format with reference to PC time or manually.

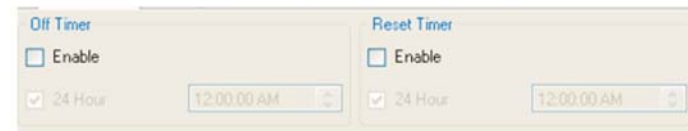


### “Auto Timer Off and Reset”

“Auto Time Off” function will set the control to shut down when time up.

Example: After 8pm, system will auto shut down that is “Turn off Projector, Turn off AV Switcher and keep Projection Screen back home position” or depending on the “Macros” setup.

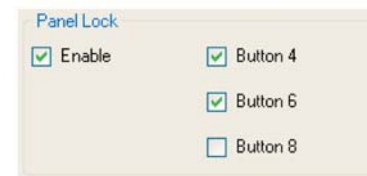
“Reset Timer” This allow “Reset” of “Panel Lock Function” when “Auto Timer Off” is set with Panel Lock” enabled.



### “Panel Lock”

This acts as a simple “Panel Lock” which disable all function and control on controller, prevent miss handling or miss used of AV Projection System controlled.

Check “enable” to enable with a simple selection of either two or three buttons combination as activation. After which, “Panel Lock” and then be “ON” and “Off” by press and hold the selected two or three buttons combination at the same time for 3 to 5 min.

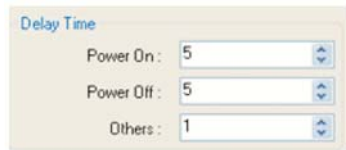


## PROGRAMMING MODE

### “Delay Time”

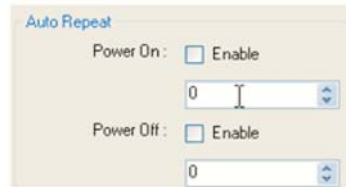
“Delay Time” setup allows setting of delay time between switching function of projector. Example: Projector ON “Warm up time”, Projector Off “Cool down time” and “Projector Input Switching interval time”

All above timing defer from Brand and model of different Projector. “On” and “Off” delay time range can set from 5 to 240 sec. “Other” as in the switching delay timing is from 1 to 5 sec.



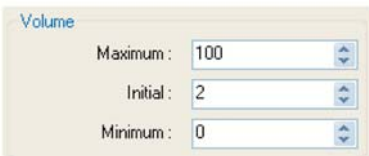
### “Auto Repeat”

“Auto Repeat” function allow projector “Power ON” and “Power OFF” command to be send twice automatically with a delay time. This may be required base on different brand and model of projector.



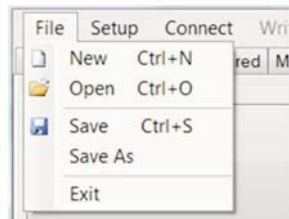
### “Volume”

“Volume” setup allows configuration of the volume setting for AV-Switcher or Projector. Initial Volume set is the default volume setting for every Power ON.



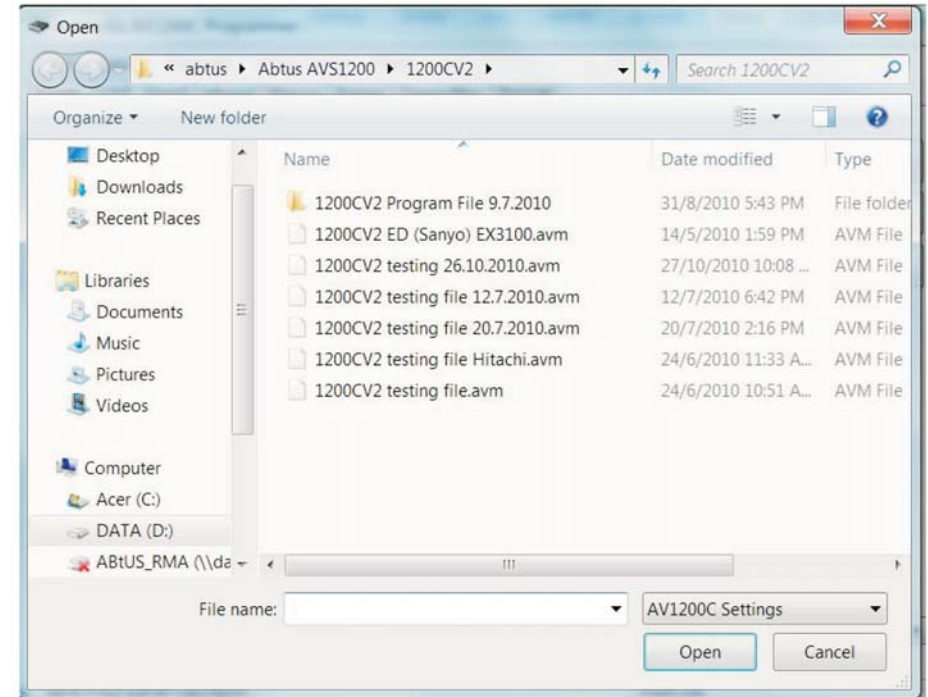
### 2.0 Under “File” Tab

- New - Opening a NEW project
- Open - Open of program
- Save - Save a Project
- Save as - Save a Project under different name and location
- Exit - Exit of Multi Media Control Program



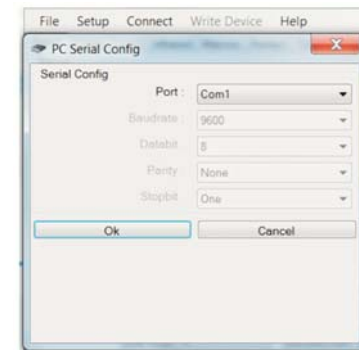
## PROGRAMMING MODE

### 2.1 Opening a program file



### 2.3 Under “Com port” Tab

Setting of serial parameter of the PC configuration/communication between the PC and Device “Controller AVS-1200CV2”



Com Port Setting:

Control Program’s RS232 communication port select. Select range: COM1~ COM6.

Note:

Control Program’s RS232 communication protocol default setup are as followed:

- Baud Rate: 9600 bps.
- Data length: 8 bits.
- Parity: Non parity.
- Stop bit: One bit.

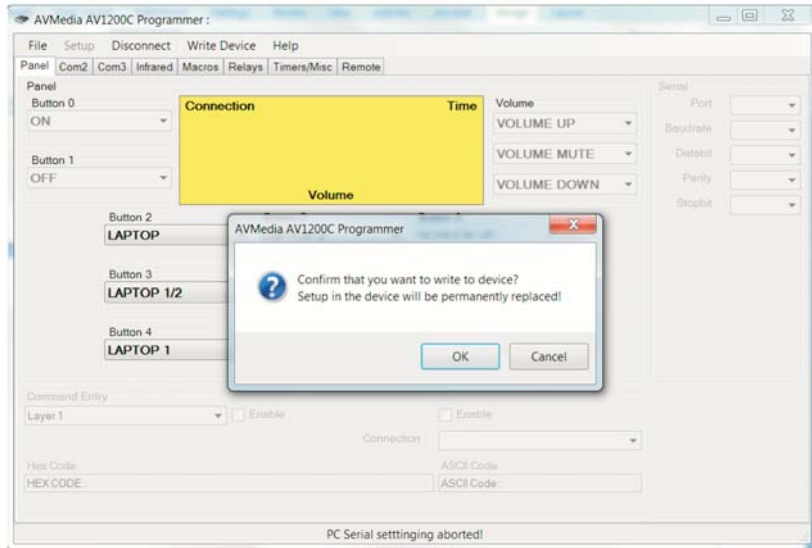
## PROGRAMMING MODE

Uploading of program file

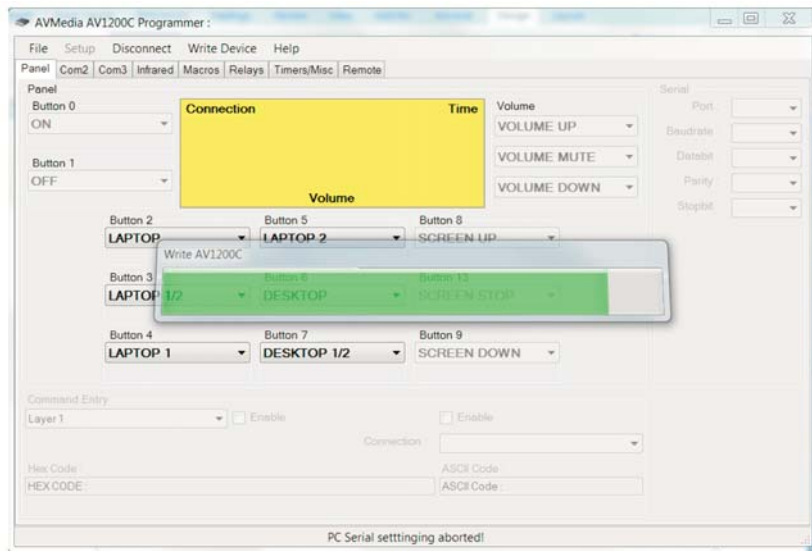
Once programming is done, uploading can be done as followed:

Connect up the PC serial to the configuration com port of the AVS-1200CV2 with the communication parameter set as stated above.

Then click “Connect” to established the connection between PC and Device (AVS-1200CV2) then click on “Write to Device” and click on OK as shown below

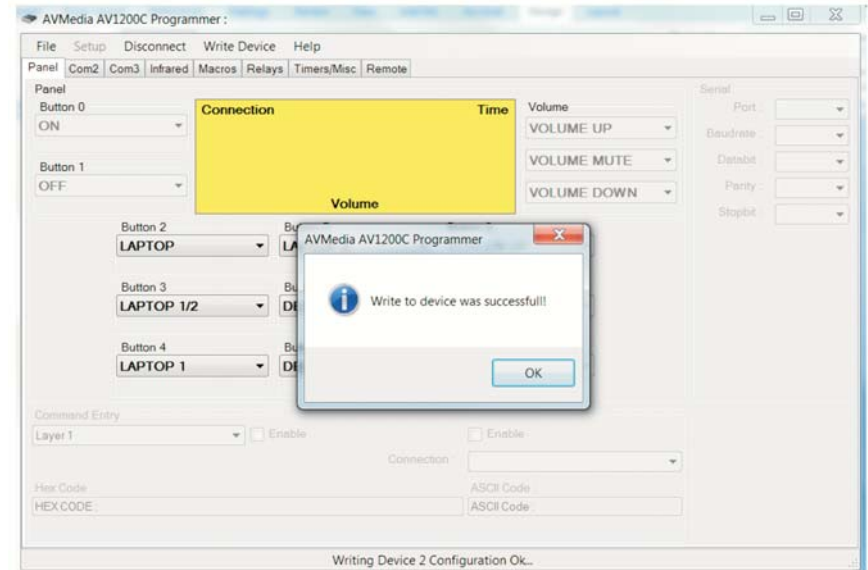


Uploading of program:



## PROGRAMMING MODE

The following windows will shows once the function is successful



Detail connection between PC and Device (AVS-1200CV2) for programming

